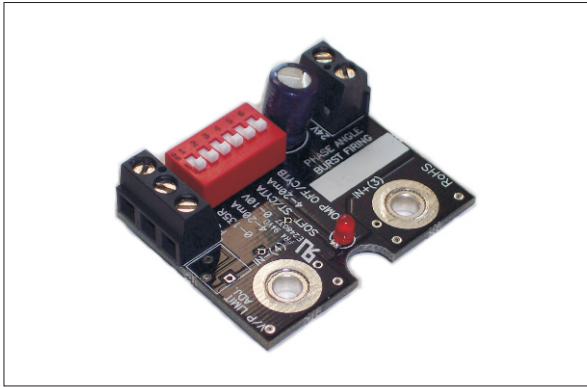


# Fast Synchronous Burst Firing Module SSRMAN-1BFS



- Fast Synchronous Firing Algorithm**
- 0.02-1% Control Resolution**
- Zero Cross Firing**
- Line Voltage Compensation**
- Input accepts 4-20mA, 0-10V, 0-5V, 0-135 , Pot**
- Drives multiple solid state relays (SSRs)**
- Small module mounts on SSR input terminals**
- Adjustable Power Limit (-PL) Option**
- Single phase and three phase control**
- LED output indicator**

## Product Description

The SSRMAN-1BFS mounts directly on the input connections of a SSR and provides 0-100% fast synchronous zero cross burst firing (time proportioning) based on the input signal. The SSRMAN-1BFS can be dipswitch configured for up to six different industry command signals and four different cycle times.

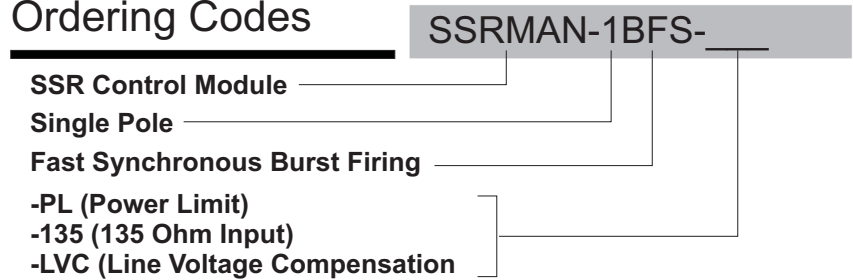
## Input Specifications

Power Supply	24VAC +/-15%, 65mA max
Command Inputs	4-20mA, 0-20mA, 0-5V, 1-5V, 0-10V, 2-10V, 0-135Ohm, Pot, PWM
Command Input Impedance	10K (0-10V), 250 Ohms (4-20mA), 100K (0-5V)
0-135Ohm Excitation Current	13mA
External Potentiometer resistance	10-25KOhm

## Output Specifications

Control Output (24VAC Nom. PWR)	SSR Drive, DC Pulse, nominally 10V @ 15mA
Response Time	16mS (or cycle time value)
Resolution	See Cycle Time Table
Linearity	1.5% (mA, pot, volts), 5% ( 0-135 Ohm)

## Ordering Codes



## Output Specifications(cont.)

Power Limit Adjustment Range      5-100% of max. output power

## Cycle Time Table

Dip Switch 6	Dip Switch 4	#of cycles	Cycle Time (60Hz)	Cycle Time (50Hz)	Resolution (% of FS)
*OFF	*OFF	~16	266mS	320mS	~1%
ON	OFF	60	1S	1.2S	1.66%
OFF	ON	600	10S	12S	0.166%
ON	ON	6000	100S	120S	0.0166%

## Thermal Specifications

Operating Temperature Range      0 to 60 degC

Storage Temperature Range      -40 to 100 degC

## Dip Switch Selections

Command Input	1	2	3	5
<b>0-5V (Default)</b>	OFF	OFF	OFF	OFF
<b>Potentiometer</b>	OFF	OFF	OFF	OFF
<b>0-10V</b>	OFF	OFF	ON	OFF
<b>4-20mA</b>	OFF	ON	OFF	ON
<b>1-5V</b>	OFF	OFF	OFF	ON
<b>2-10V</b>	OFF	OFF	ON	ON
<b>0-135 *</b>	ON	OFF	OFF	OFF

## Dimensions

